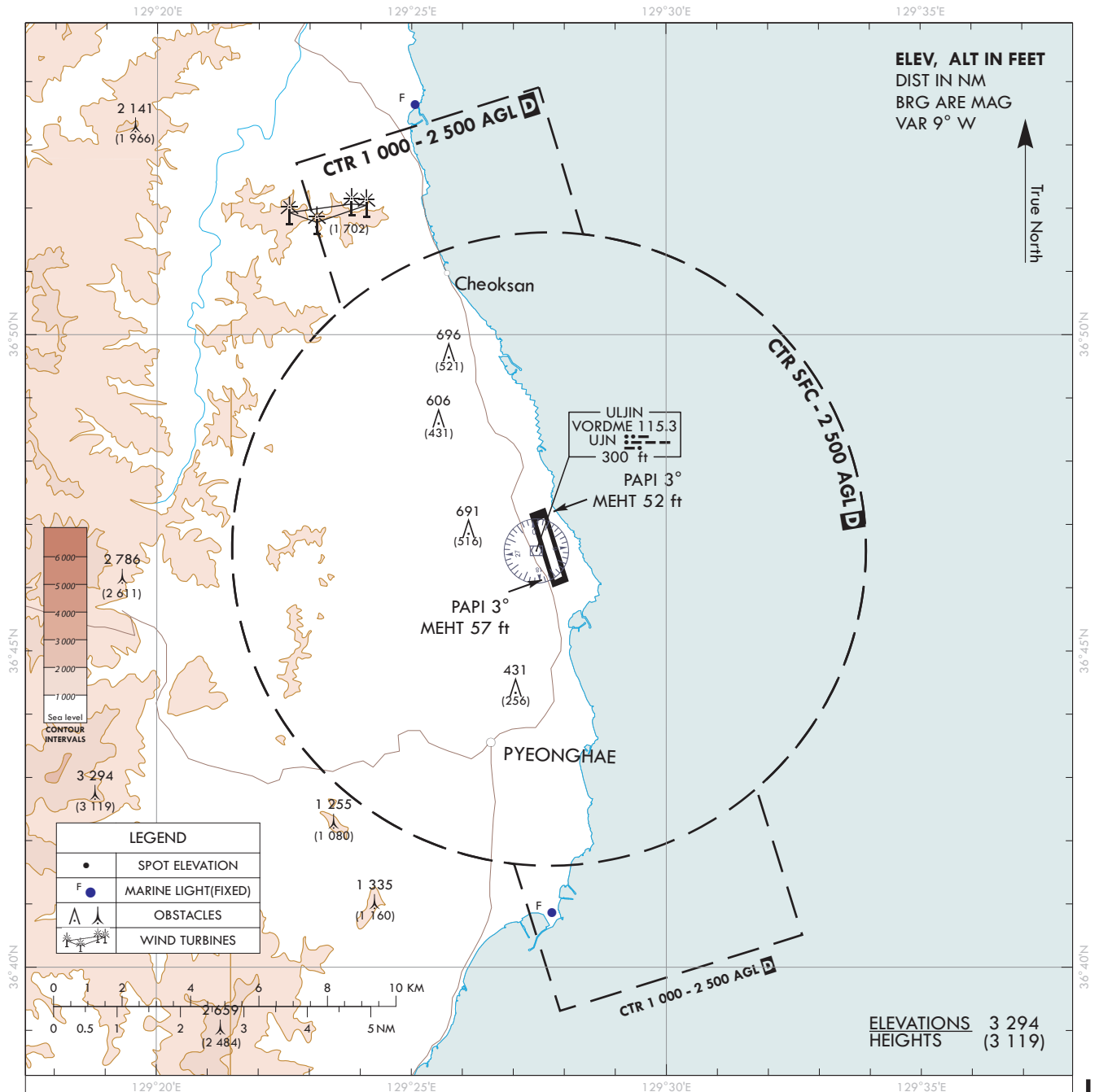


**VISUAL  
APPROACH  
CHART - ICAO**

AD ELEV 175 ft  
HEIGHTS RELATED  
TO AD ELEV

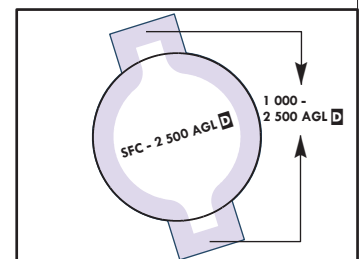
ULJIN	APP	120.875
		317.65
ULJIN	TWR	118.55

ULJIN/Uljin



**ATS airspace Classifications**

- Class D : Radius of ULJIN Aerodrome ARP(364637N 1292742E)  
Vertical limits  
- Within 5 NM(SFC - 2 500 ft AGL)  
- And including areas which are extended Southbound from  
364139N 1292702E – 363920N 1292755E –  
364031N 1293240E – 364250N 1293147E and Northbound from  
365136N 1292823E – 365354N 1292730E –  
365243N 1292244E – 365024N 1292338E (1 000 ft AGL - 2 500 ft AGL)  
Speed limits : 250 kt IAS or less below 10 000 ft AMSL  
200 kt IAS or less at or below 2 500 ft AMSL within 4 NM of the airport
- Class E : Controlled Airspace except Class A, B, C and D  
Vertical limits  
- Airspace(Lands and Waters) : 1 000 ft – 60 000 ft from the surface of the earth or sea  
- Airspace over the high seas : 5 500 ft, from the surface of the sea, – 60 000 ft AMSL  
Speed limits : 250 kt IAS or less below 10 000 ft AMSL



Change : Establishment of ATS airspace classifications and information of CTR.